

Non Hazardous • No PFA's

isc
Services

FLEX SEAL 2.0®

Manhole /Catch Basin joint sealing system



An inexpensive and permanent method of sealing the grade adjustment ring area and joint sections in a manhole or catch basin from inside of the structure. This state-of-the-art urethane material is easily applied by certified installers.

- NO PRIMER NEEDED (lower labor costs)
- 800+% elongation (will not tear)
- 80+ PLI peel force adhesion (will not peel)
- Easily applied by brush

ALL PURPOSE FLEX-SEAL 2.0® ADHERES TO:

- Plastic Rings*
- Cast / Metal
- Cementitious Materials

* Flex-Seal 2.0® primer needed for plastic rings

FLEX-SEAL 2.0® Installation Instructions

This product must be applied at temperatures above 0°C. Openings or gaps 6mm to 12mm should be filled with backer rod, low expansion spray foam insulation, foam weather striping or a quick set cement. Gaps over 12mm should be filled with only quick set cement. All hydrostatic leaks must be stopped with an appropriate water stop material. A hydraulic cement or “Chimney Patch Repair” distributed by ISC Services is recommended.

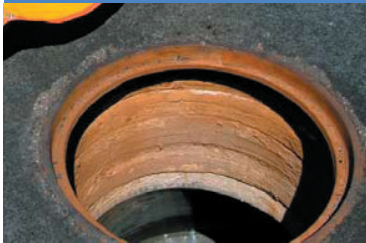
If using cementitious materials for rehabilitation contact the manufacturer for the proper preparation required to bond coatings to their material and the amount of time required for the cement to completely cure. **Flex-Seal 2.0® will not bond properly to uncured cement.** If coating any plastic material such as HDPE or Polypropylene, you must use a Flex-Seal 2.0® primer prior to application. *Please read instructions on the pail prior to applying the Flex-Seal 2.0® for proper thickness requirements.

| Property | Measuring Condition | Flex-Seal 2.0® |
|-----------------------|-----------------------------------|---------------------------|
| Weight | ASTM-E 201 | 1.47 kg/L |
| Solid Content | By Volume | 100% |
| Hardness (Durometer) | ASTM-C661 | 22 Shore A |
| Elongation (at break) | ASTM-D 412 | 855% |
| Tensile Strength | ASTM-D 412 | 269 p.s.i. |
| Adhesive Strength | ASTM -D 903 | 84 PLI (Cohesive Failure) |
| Water Adsorption | ASTM -D 570 | 1.326% (wt%, 24 hours) |
| Tear Resistance | ASTM-D 1004 | 80 PLI |
| Weatherability | ASTM-D 822 500 hrs | No Change, No Chalking |
| Temp. Cure Range | Fed Std 141 meth 6223 | -54°C to 121°C |
| Shelf Life | Storage Temp. 22°C | 2 years |
| Cure Time | 170 mils (4.3mm) thickness @ 22°C | 8-10 Hours |
| Service Temp. | | -45°C to 104°C |
| Application Temp. | | 0°C to 65°C |

| | |
|------------------------------|------------------|
| Calcium Chloride (Road Salt) | No Effect |
| 1% Detergent Solution | No Effect |
| Chlorinated Pool Water | No Effect |
| Anti-Freeze | No Effect |
| Motor Oil | Stained |
| Hydraulic Brake Fluid | Slight Bleaching |
| Gasoline | Slight Swelling |
| Hydrogen Sulfide | No Effect |
| Sulfuric Acid (20%) | No Effect |
| Sodium Hydroxide (5%) | No Effect |

Disclaimer: This technical data information and recommendations offered are based on test results, and findings we believe to be reliable and complete.

1. PREP



2. SANDBLAST



3. CLEAN



4. COAT



INDEPENDENT SEWER
CONSULTING SERVICES PTY LTD

Unit 13 /1 Adept Lane Bankstown NSW 2200
Ph 02 9790 2024 | sales@iscservices.com.au
www.iscservices.com.au