

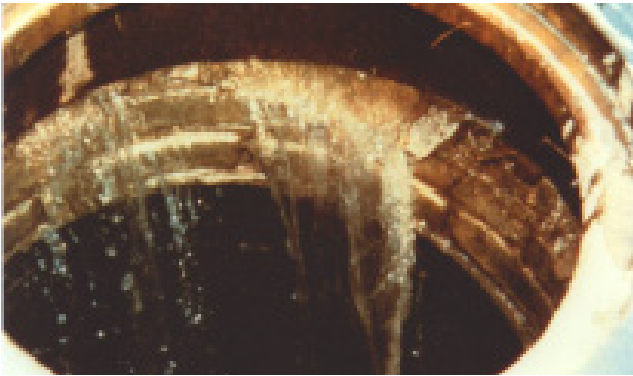


# UNI-BAND

## INFI-SHIELD® EXTERNAL UNI-BAND

Prevents Infiltration and Siltation in Sanitary Manholes and Catch Basins

### THE PROBLEM



### THE PROBLEM



The improved Infi-Shield® External Uni-band is an inexpensive and permanent method of externally sealing the grade adjustment ring area of a manhole. The one piece molded seal has a reinforced preformed L shaped corner. Accommodating ground movement, Infi-Shield® External Uni- band's high quality rubber and non-hardening butyl mastic provide a flexible water-tight seal around the structure. Infi-Shield® External Uni-band saves taxpayer's money by not having to treat the ground water and by avoiding expensive repair and maintenance costs.

### THE SOLUTION

Works on  
top slab  
installations  
too!



# INFI-SHIELD® EXTERNAL UNI-BAND

## APPLICATION STANDARDS & TECHNICAL, DATA TEST RESULTS

PROPERTY	ASTM TEST METHOD	REQUIREMENTS	TEST RESULTS
Hardness	D2240	60 +/-5 DURO	61 DURO
Tensile	D412	1200 PSI/MIN	1510 PSI/MIN
Elongation	D412	350 % MIN	460%
Ozone resistance	D1149 72 HRS @ 50 PPHM	NO CRACKS	PASS
Compression set	D395 METHOD B 22 HRS @ 77°C	25% MAX	24%
Heat aged hardness	D573 70 HRS @ 100°C	No Requirements	+65(+4 PTS)
Heat aged tensile	D573 70 HRS	-15% MAX	-1390 PSI (-14%)
Heat aged elongation	D573 70 HRS @ 100°C	-20% MAX	370% (-20%)
Water resistance	D471 70 HRS @ 100°C	VOLUME CHANGE +10% MAX	1.80%
Low temperature brittleness	D2137 -40°C	NO CRACK ON IMPACT	PASS

Disclaimer: This technical data information and recommendations offered are based on test results, and findings we believe to be reliable and complete.

The Infi-Shield® External Uni-band has an inspection tab attached at the top of the seal and an aerosol primer is also included. A clean surface is necessary but no special tools are required for installation. The Infi-Shield® External Uni-band can be immediately backfilled.



INDEPENDENT SEWER CONSULTING SERVICES PTY LTD

Unit 13 /1 Adept Lane Bankstown NSW 2200  
 Ph 02 9790 2024 | sales@iscservices.com.au  
[www.iscservices.com.au](http://www.iscservices.com.au)