

WATER TREATMENT AND WASTEWATER PROTECTIVE LINING SYSTEMS

METZ



Severe corrosion occurs in many areas of the water treatment and wastewater asset network. Attack comes from handling and containing the strong acids and alkalis used for water treatment, as well as from the corrosive effects of H₂S, Microbiologically Induced Corrosion and chemical wastes in the wastewater network. Metz protective linings have been protecting against severe corrosion since 1953 and can assist to prolong the life of your critical infrastructure elements.



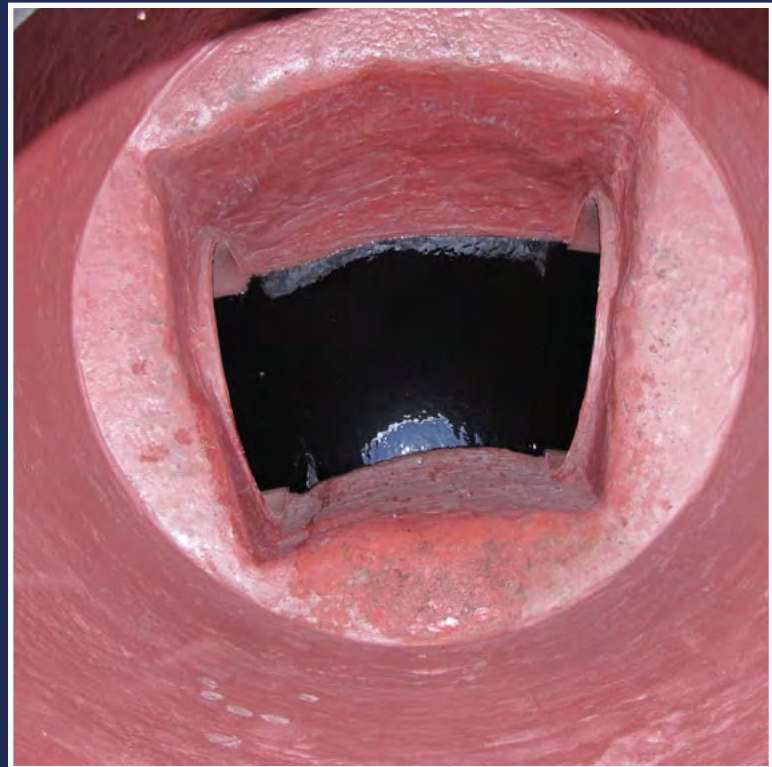
established 1953

www.metz.net.au





Metz has a range of materials to protect new and to rehabilitate old degraded assets in the wastewater network. Protecting newly built concrete and steel elements with a high performance, chemical resistant, strong and impervious material is the ideal approach. Refurbishing pump stations, manholes, wet wells etc. whilst in service is extremely costly and intrusive to network operations. Rehabilitating and applying coatings to live assets imposes difficulties from contamination, wet substrate, limited and dangerous access as well as short windows for application and curing. Metz have been solving clients corrosion problems since 1953 and can assist with your wastewater rehabilitation requirements.





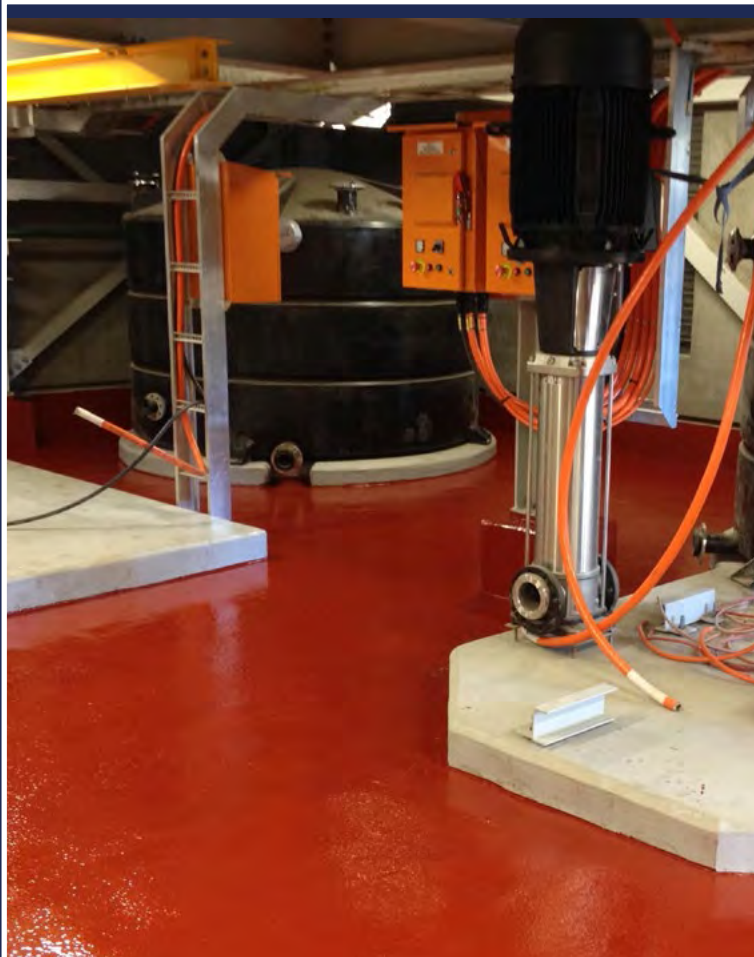
Metz can provide a broad range of acid resistant materials including:

- Epoxy and Epoxy Novolacs
- Vinyl Esters and Furanes
- Potassium Silicates
- Viton® Fluoropolymers
- Polyurethanes



Metz products are formulated as:

- Coatings, Linings and Membranes
- Toppings and Concretes
- Castable and Gunning materials
- Adhesives and Mortars
- Movement Joints and Caulks



ABOUT METZ

Metz has been a supplier and manufacturer of specialist building materials since it was founded in Melbourne on the 25th of June 1953. Metz today remains a proudly Australian owned company. Our Quality Accredited manufacturing facility is still located in Melbourne, with our head office in Sydney and a branch office in Brisbane. From these three offices we operate Australia-wide as well as exporting materials to Asia, the Pacific and the Middle East.

In Australia a core difference between Metz and our competitors is the ability to offer our clients a unique single point of responsibility - local material manufacture combined with full installation services. The ability to install all the materials we offer means Metz's material knowledge, practical site experience and therefore technical responsiveness is unsurpassed.

In overseas markets Metz regularly send experienced supervisors for training of our distributor network and for ensuring quality installations are achieved on site.

Please contact one of the Metz offices or your local distributor for any further assistance.

Your local Metz Distributor



Dennis Bentink

mob: 0411 961 630

e: dennis@iscservices.com.au

Unit 13/1 Adept Lane
Bankstown NSW 2200

www.iscservices.com.au



METZ LOCATIONS

Head Office - SYDNEY

15A Stanton Road
Seven Hills NSW 2147, Australia

Postal: PO Box 4076
Marayong NSW 2148, Australia

Phone: +61 2 9671 1311
Facsimile: +61 2 9671 4292

email: sydney@metz.net.au

Office & Manufacturing - MELBOURNE

6 University Place
Clayton North VIC 3168, Australia

Postal: PO Box 191
Mount Waverley VIC 3149, Australia

Phone: +61 3 9561 6144
Facsimile: +61 3 9561 6944

email: melbourne@metz.net.au

Office - BRISBANE

Unit 16, 42 Smith Street
Capalaba QLD 4157, Australia

Postal: PO Box 152
Capalaba QLD 4157, Australia

Phone: +61 7 3823 5555
Facsimile: +61 7 3823 5552

email: brisbane@metz.net.au

Office - UNITED ARAB EMIRATES

PO Box 135144
Masdar City, United Arab Emirates

Phone: +971 56826 9443

email: gulf@metz.co.ae